



## FEATURES INCLUDE:

- Steel Oil Storage Tank Design
- Analysis Output and Reports
- Complete Unit Flexibility
- API Standards 650 and 653
- API 2002 4.3 for Venting
- Allowable Fluid Heights
- Nozzle Loads and Flexibilities
- Carbon and Stainless Steel
- Extensive Material Databases
- Wind Loads and Anchorage
- Seismic and Support Settlement Loads
- Shell Course Thicknesses
- Supported Cone Roofs
- Cone, Dome, and Umbrella Roof Thicknesses

## TANK™

**Intergraph® TANK™ is a comprehensive, easy-to-use software package for the design, analysis and evaluation of oil storage tanks. It provides you with quick and accurate designs for new tanks and evaluation of existing tanks.**

### Data Collection

The menu-driven interface of TANK allows for the quick definition of input and functions for the accurate analysis of oil storage tanks to American Petroleum Institute (API) standards.

Increased flexibility is provided by allowing you to select any unit combination for analyses or to produce reports. In addition, unit files are completely user-definable, so engineers are not bound by program default settings. Even existing jobs can be converted to any existing unit format.

### User Interface

The user interface in TANK presents only what is needed at each point of information gathering. Therefore, you are not burdened with “out-of-sequence” requirements for information required for analysis. You are asked for what is needed, when it is needed.

### Analysis Options and Codes

TANK performs calculations in accordance with the latest API Standards 650 and 653. Analysis can also take into account wind, seismic, and settlement conditions, plus calculate air venting requirements to API 2000 Section 4.3.

### Output and Reports

After completing an analysis, you can view the results in a tabular report or as a graphic diagram with associated data. For convenience in verifying the results, the output reports reference code sections used where applicable.

### Material Databases

TANK has many databases integral to the package, which make it easy to select standard data for accurate analysis. A number of U.S. and international structural steel databases are provided. API materials are available from 1998 through 2008.

### Quick, Context-Sensitive Help

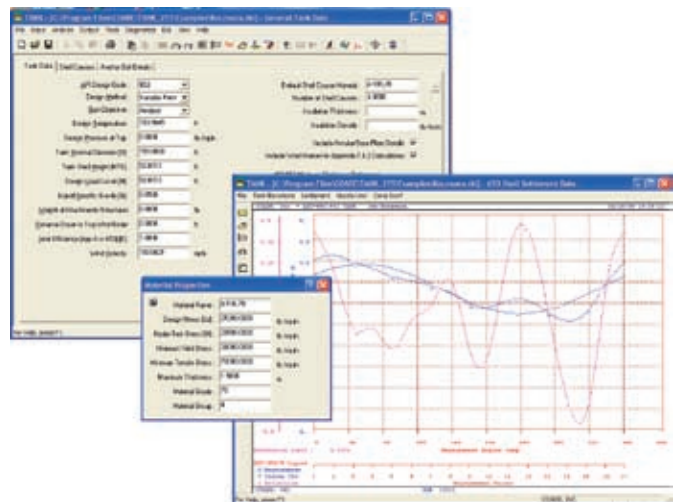
TANK's context-sensitive help provides instant technical assistance at the point of input. Pertinent information is presented relative to each selected item, including code references and technical advice. Built-in search makes for rapid navigation.

## Technical Specs

- Microsoft® Windows® XP Pro or Windows Vista Ultimate (minimum)

## Application Areas

- Chemical
- Equipment
- Petrochemical
- Piping
- Power
- Process and Plant Design
- Water Treatment



TANK's intuitive interface employs user-defined materials and units and produces clear and accurate analysis reports.

## ABOUT INTERGRAPH

Intergraph is the leading global provider of engineering and geospatial software that enables customers to visualize complex data. Businesses and governments in more than 60 countries rely on Intergraph's industry-specific software to organize vast amounts of data into understandable visual representations and actionable intelligence. Intergraph's software and services empower customers to build and operate more efficient plants and ships, create intelligent maps, and protect critical infrastructure and millions of people around the world.

Intergraph operates through two divisions: Process, Power & Marine (PP&M) and Security, Government & Infrastructure (SG&I). Intergraph PP&M provides

enterprise engineering software for the design, construction, and operation of plants, ships, and offshore facilities. Intergraph SG&I provides geospatially powered solutions to the defense and intelligence, public safety and security, government, transportation, photogrammetry, utilities, and communications industries.

For more information, visit [www.intergraph.com](http://www.intergraph.com).

